



Helix Floor Expression Pedal Troubleshooting Instructions



The following instructions illustrate how to resolve loosening and squeaking problems that may be encountered with your Helix® floor processor's built-in expression pedal. Line 6 recommends that this service be performed by an Authorized Service Center. If you choose to perform this rework yourself, you do so at your own risk.



Revision Comment Sheet

Revision	Changes
A	INITIAL RELEASE



The Helix product contains Hazardous Voltages that can cause serious injury or death.

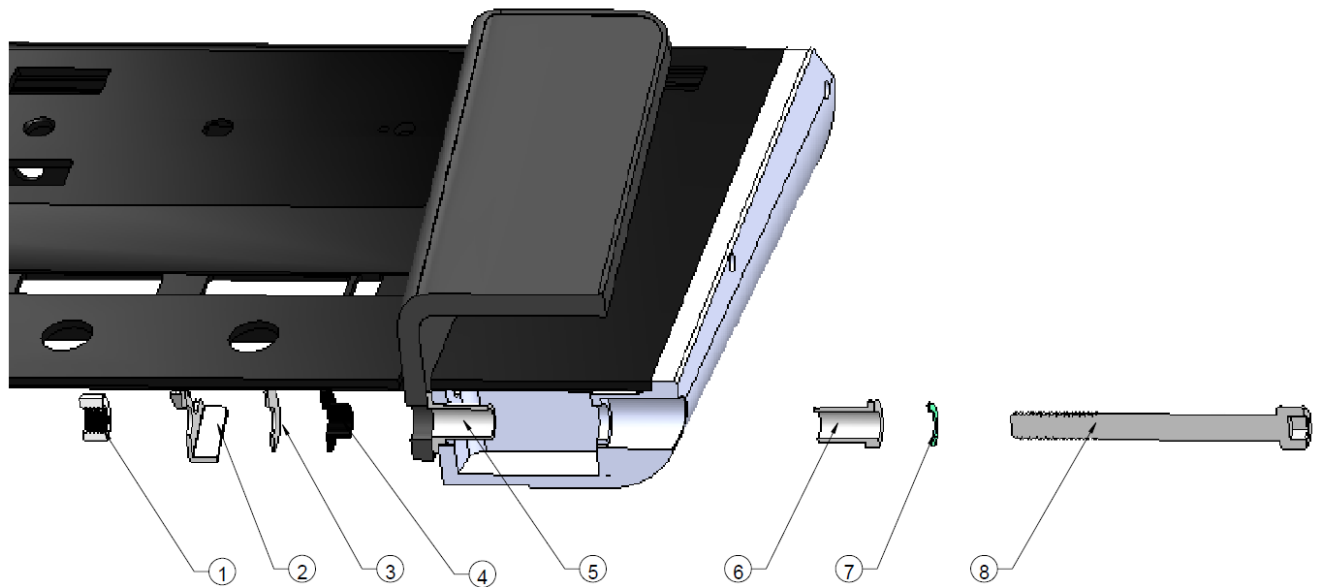
Do not attempt to troubleshoot the expression pedal until you have read and fully understood these instructions.

Before troubleshooting the expression pedal, ensure the following is complete:

- **Helix power cord is disconnected from the Helix.**
- **Power switch is set to “OFF”.**
- **There are no liquids near your work area.**



Pedal Assembly Exploded View



ITEM NO.	PART NUMBER	DESCRIPTION	QTY.
1	30-06-0047	LOCK NUT M10 BLACK P21	1
2	30-51-0686	Mounting washer	1
3	30-03-0073	Pedal washer	1
4	30-03-0074	Inner Washer	1
5	30-03-0069	Larger Washer	1
6	30-03-0075	Shoulder Washer	1
7	30-03-0076	Washer Steel	1
8	30-00-0382	M10 Screw	1



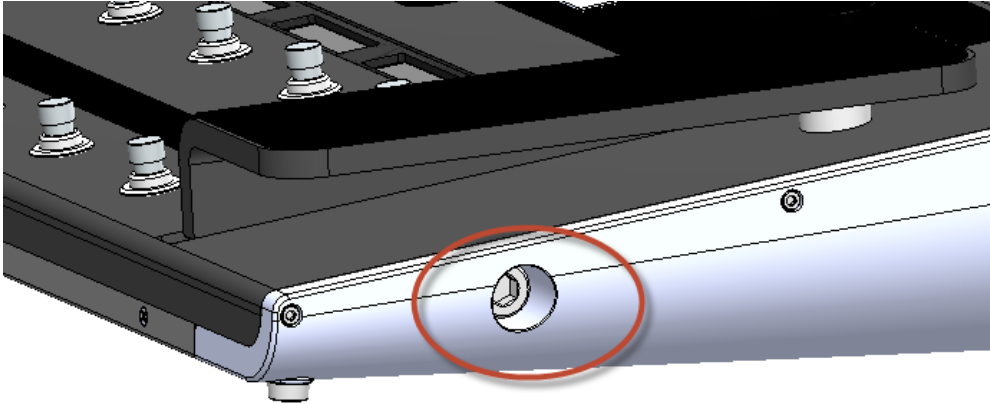
Troubleshooting Instructions

- 1.) Using a Phillips head screwdriver, remove indicated screws and remove the bottom panel (50-50-0093):

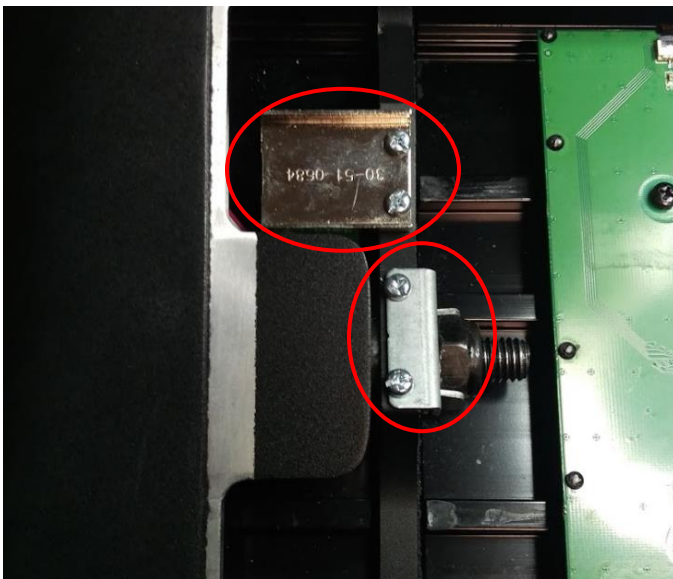




- 2.) Using the M10 Allen wrench supplied for pedal adjustment, loosen and fully remove the pedal axle bolt (30-00-0382):



- 3.) If you are experiencing problems with your pedal squeaking (Steps 3 & 4): Remove four M3 screws, pedal reflector (30-51-0684) and mounting washer (30-51-0686) from the pedal. Remove pedal (30-51-0666) and plastic shoulder washers (30-03-0069, 30-03-0074, 30-03-0074) from unit.







- 4.) Inspect the contact surfaces of the middle pedal washer (30-03-0069) and the inside face of the pedal for wear. Clean off any plastic, dust or debris that may be present.



If the washers in your unit are made from a black plastic material, please send your Helix to your nearest Authorized Service Center to have them replaced. If these washers are a dark grey or silver material, they do not need to be replaced.



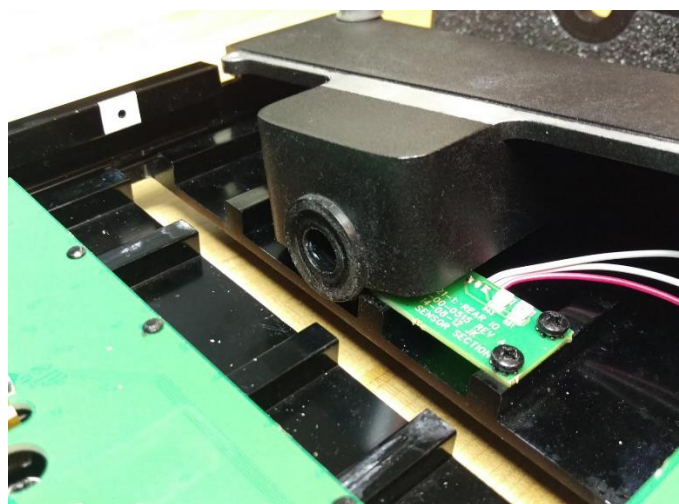
5.) If you are experiencing problems with your pedal loosening: Lightly and evenly apply white lithium grease to the M10 bolt on the shoulder surface only. Do not apply grease to threads.





6.) Reinstall pedal hardware as shown below:

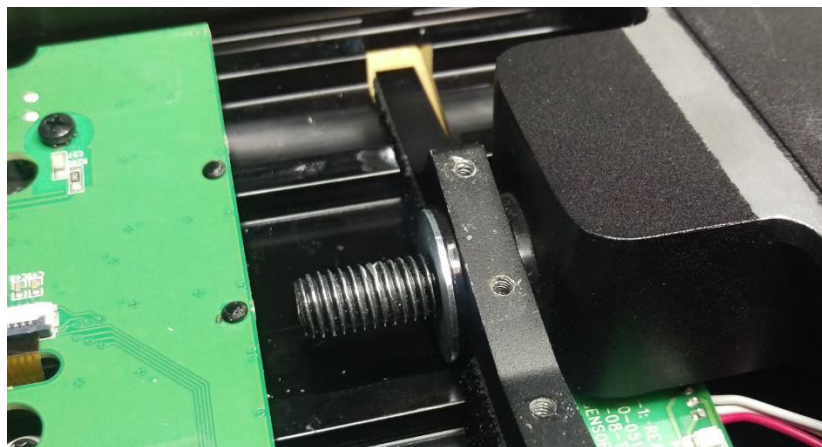
- a. Insert middle washer (30-03-0069) into chassis:



- b. Insert bolt (30-00-0382), small steel washer (30-03-0076) and narrow washer (30-03-0075) into outer side of endcap:



- c. Bring pedal (30-51-0666), inner washer (30-03-0074) and large steel washer (30-03-0073) through pedal slot and insert the bolt:

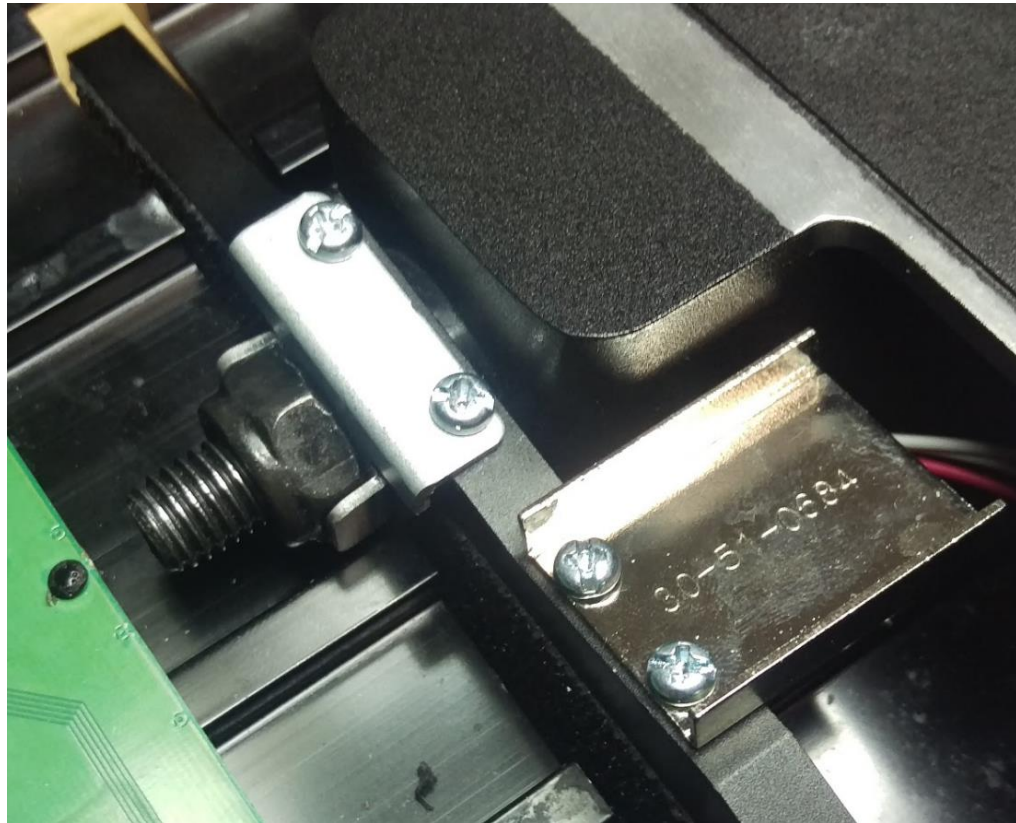




- d. Install mounting washer (30-51-0686) and lock nut (30-06-0047). Tighten lock nut until washers are seated against pedal:



- e. Secure mounting washer and pedal reflector (30-51-0684) to pedal with M3 screws:



7.) Reinstall bottom panel (reverse of Step 1).

8.) Using supplied M10 Allen wrench, set pedal to desired tightness. Recommended factory spec is 25-30 kgf-cm (22-26 in-lbs).